

ILLNESS PREVENTION ESSENTIALS

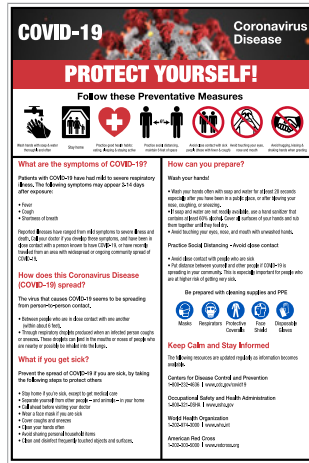
Guide employees, contractors, visitors, students and staff safely around your workplace, job site or educational institution with illness prevention products like signs, posters, floor markings and more.

Lessons have been learned and best practices are now habit, but identification adds important reinforcement of messaging. For preventative signage, start with NMC's Illness Prevention Essentials.

Posters



Part #	Material	Size
PST139	HDP	24 x 18
PST139C	HDP	18 x 12
PST139PP	PP	18 x 12, 5/pk



Part #	Material	Size
PST141	HDP	24 x 18
PST141C	HDP	18 x 12
PST141PP	PP	18 x 12, 5/pk



Material Reference Chart:

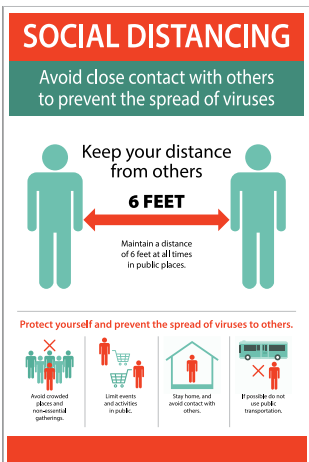
HDP	Heavy-Duty Poster Paper
PP	Poster Paper



Part #	Material	Size
PST149	HDP	24 x 18
PST149C	HDP	18 x 12
PST149PP	PP	18 x 12, 5pk



Part #	Material	Size
PST142	HDP	24 x 18
PST142C	HDP	18 x 12
PST142PP	PP	18 x 12, 5pk
PST142SP	HDP	24 x 18
PST142CSP	HDP	18 x 12
PST142PPSP	PP	18 x 12, 5pk



Part #	Material	Size
PST148	HDP	24 x 18
PST148C	HDP	18 x 12
PST148PP	PP	18 x 12, 5pk



Part #	Material	Size
PST180	HDP	24 x 18
PST180C	HDP	18 x 12
PST180PP	PP	18 x 12, 5pk
PST180SP	HDP	24 x 18
PST180CSP	HDP	18 x 12
PST180PPSP	PP	18 x 12, 5pk

Signs

Post signs in your facility to convey the importance of hand-washing, social distancing, and face coverings to prevent spreading illness.



Part #	Material	Size
WH6P	PSV	7 x 10
WH6PB	PSV	10 x 14
WH6PBR	PBR	10 x 14
WH6PR	PBR	7 x 10
WH6RB	RB	10 x 14



Part #	Material	Size
NGA37RB	RB	10 x 14
NGA37PBR	PBR	10 x 14
NGA37AB	AL	10 x 14



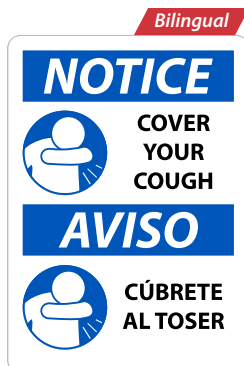
Part #	Material	Size
WH1P	PSV	10 x 7
WH1PB	PSV	14 x 10
WH1PBR	PSVR	14 x 10
WH1PR	PSVR	10 x 7
WH1RB	RB	14 x 10



Part #	Material	Size
WH2P	PSV	10 x 7
WH2PB	PSV	14 x 10
WH2PBR	PSVR	14 x 10
WH2PR	PSVR	10 x 7
WH2RB	RB	14 x 10



Part #	Material	Size
WH4P	PSV	10 x 7
WH4PB	PSV	14 x 10
WH4PBR	PSVR	14 x 10
WH4PR	PSVR	10 x 7
WH4RB	RB	14 x 10



Part #	Material	Size
ESN523AB	AL	14 x 10
ESN523PB	PSV	14 x 10
ESN523RB	RB	14 x 10



Part #	Material	Size
N520PB	PSV	14 x 10
N520PBR	PSVR	14 x 10
N520RB	RB	14 x 10



Part #	Material	Size
M618AB	AL	10 x 14
M618PB	PSVR	10 x 14
M618RB	RB	10 x 14



Material Reference Chart:

- PSV** Pressure Sensitive Vinyl
- PSVR** Removable Adhesive Backed Vinyl
- RB** Rigid Plastic
- AL** Aluminum



Don't see what you need?

Our Customer Support Team is here to help you every step of the way.

Reach out today to get started!

Clean & Sanitized Labels

Inspire confidence that your environment is virus and bacteria free with labels to identify recent sanitation.

Available in packs and rolls, in Pressure Sensitive Vinyl (PSV) or Pressure Sensitive Removable Vinyl (PSVR).



ML77P



ML78PR

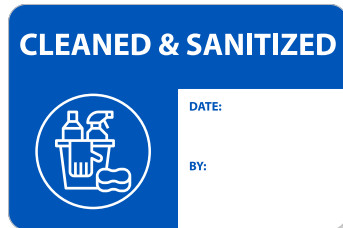
ITEM NO	SIZE	MATERIAL	QUANTITY
ML77P	2" Dia	PSV	25/Pk
ML77P500	2" Dia	PSV	500/Roll
ML78PR	2" Dia	PSVR	25/Pk
ML78PR500	2" Dia	PSVR	500/Roll



ML87PR

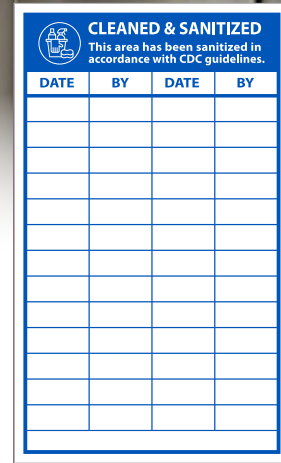


WOL21500



WOL22500

ITEM NO	SIZE	MATERIAL	QUANTITY
ML87PR	3 x 9	PSVR	25/Pk
ML87PR500	3 x 9	PSVR	500/Roll
WOL21500	1 x 3	PSVR	500/Roll
WOL22500	2 x 3	PSVR	500/Roll



ML86APR

ITEM NO	SIZE	MATERIAL	QUANTITY
ML86APR	5 x 3	PSVR	5/Pk
ML86APR500	5 x 3	PSVR	500/Roll



ML80PR

ITEM NO	SIZE	MATERIAL	QUANTITY
ML80PR	2 x 3	PSVR	25/Pk
ML80PR500	2 x 3	PSVR	500/Roll

Mesh & Vinyl Banners

Convey your commitment to safety and employee well-being by posting informative banners in highly visible locations both inside and outdoors.

Available in Spanish

COVID-19 **PROTECT YOURSELF!**

Follow these Preventative Measures

- Wash your hands often with soap and water for at least 20 seconds.
- If soap and water are not available use a hand sanitizer with at least 60% alcohol.
- Maintain a 6 foot distance between people whenever possible.
- Avoid touching your eyes, nose, and mouth.
- Cover your mouth and nose when you cough or sneeze.

Part #	Size
BT61	6' x 12' English
BT561	5' x 10' English
SPBT61	6' x 12' Spanish
SPBT561	5' x 10' Spanish



Available in Spanish

Give each other space. 6 feet

COVID-19 Safety Precautions

- Stay home if you are sick.
- Wash your hands often with soap and water for at least 20 seconds.
- If soap and water are not available use hand sanitizer with at least 60% alcohol.
- Maintain a 6 foot distance between people whenever possible.
- Wear a mask when close contact cannot be avoided.
- Avoid touching your eyes, nose, and mouth.
- Cover your mouth and nose when you cough or sneeze.

Feeling Sick?
If you feel unwell or have the following symptoms **DO NOT ENTER THE JOB SITE**

FEVER, COUGH, SHORTNESS OF BREATH

If you start feeling symptoms while you are at work please leave and contact your health care provider. Then follow-up with your supervisor.

Part #	Size
BT62	Mesh 6' x 12' English
BT562	Mesh 5' x 10' English
SPBT62	Mesh 6' x 12' Spanish
SPBT562	Mesh 5' x 10' Spanish

COVID-19 **Coronavirus Disease**

PROTECT YOURSELF!

Follow these Preventative Measures

- Wash hands with soap & water thoroughly and often
- Stay home
- Practice good health habits: eating, sleeping & staying active
- Practice social distancing, maintain 6 feet of space
- Avoid close contact with sick people (those with fever & cough)
- Avoid touching your eyes, nose and mouth
- Avoid hugging, kissing & shaking hands when greeting

Part #	Size
BT77	Vinyl 3' x 10'
BT577	Vinyl 3' x 5'

Stay home if you are sick.
Feel like you're coming down with something?

COMMON SYMPTOMS	FEVER OR CHILLS	HEADACHE	BODY ACHES	FATIGUE, WEAKNESS	CONGESTION, RUNNY NOSE	SNEEZING	SORE THROAT	COUGH	SHORTNESS OF BREATH	LOSS OF TASTE OR SMELL	NAUSEA OR VOMITING	DIARRHEA
COLD <i>Onset of Symptoms GRADUAL</i>	RARE	RARE	SOMETIMES	SOMETIMES	COMMON	COMMON	COMMON	BLD	-	-	-	RARE
FLU <i>Onset of Symptoms SUDDEN</i>	COMMON	COMMON	COMMON	COMMON	SOMETIMES	-	SOMETIMES	COMMON	-	-	-	RARE
COVID-19 <i>Onset of Symptoms GRADUAL</i>	COMMON	SOMETIMES	SOMETIMES	COMMON	RARE	-	SOMETIMES	COMMON	COMMON	SOMETIMES	SOMETIMES	SOMETIMES

You may have COVID-19 if you experience one or more of these symptoms.

Covid-19 symptoms range from mild to severe and may appear 2 to 14 days after exposure.

Part #	Size
BT85	Vinyl 3' x 10'
BT585	Vinyl 3' x 5'

KEEP THE WORKPLACE SAFE

PRACTICE GOOD HYGIENE	BE CAREFUL WITH MEETINGS	HANDLE FOOD CAREFULLY	STAY OR GO HOME IF...
<p>No handshakes</p> <p>Wash with soap and water for 20 seconds or use alcohol-based sanitizers.</p> <p>Cover coughs and sneezes.</p> <p>Disinfect surfaces</p>	<p>Use video conferencing or calls for meetings when possible.</p> <p>Hold in-person meetings in open, well-ventilated spaces.</p> <p>Consider postponing large gatherings.</p>	<p>Limit the sharing of food.</p> <p>Ensure cafeteria staff practice strict hygiene.</p>	<p>Stay home if you are sick.</p> <ul style="list-style-type: none"> Fever Cough Shortness of breath <p>Stay home if you have a sick family member at home.</p>

PREVENT THE SPREAD OF GERMS!

Part #	Size
BT79	Vinyl 3' x 10'
BT579	Vinyl 3' x 5'



Adhesive Floor Signs



Part #	Material	Size
WFS83TXRD	TexWalk®	8" Dia.
WFS83TXRD10	TexWalk®	8" Dia. 10/pk
WFS83ARD	Temp-Step™	8" Dia.
WFS83ARD10	Temp-Step™	8" Dia. 10/pk
WFSM83RD	Walk-On™ Smooth	8" Dia.
WFSM83RD10	Walk-On™ Smooth	8" Dia. 10/pk
WFS83RD	Walk-On™ Textured	8" Dia.
WFS83RD10	Walk-On™ Textured	8" Dia. 10/pk



Part #	Material	Size
WFS71TX	TexWalk®	11.75 x 11.75
WFS71A	Temp-Step™	12 x 12
WFSM71	Walk-On™ Smooth	12 x 12
WFS71	Walk-On™ Textured	12 x 12



Part #	Material	Size
WFS84TXRD	TexWalk®	8" Dia.
WFS84TXRD10	TexWalk®	8" Dia. 10/pk
WFS84ARD	Temp-Step™	8" Dia.
WFS84ARD10	Temp-Step™	8" Dia. 10/pk
WFSM84RD	Walk-On™ Smooth	8" Dia.
WFSM84RD10	Walk-On™ Smooth	8" Dia. 10/pk
WFS84RD	Walk-On™ Textured	8" Dia.
WFS84RD10	Walk-On™ Textured	8" Dia. 10/pk



Part #	Material	Size
WFS78TXYL	TexWalk	20 x 2.25
WFS78TXYL10	TexWalk	20 x 2.25, 10pk
WFS78AYL	Temp-Step	20 x 2.25
WFS78AYL10	Temp-Step	20 x 2.25, 10pk
WFSM78YL	Walk-On™ Smooth	20 x 2.25
WFSM78YL10	Walk-On™ Smooth	20 x 2.25, 10pk
WFS78YL	Walk-On™ Textured	20 x 2.25
WFS78YL10	Walk-On™ Textured	20 x 2.25, 10pk



Part #	Material	Size
WFS73TX	TexWalk	11.75 x 11.75
WFS73A	Temp-Step	12 x 12
WFSM73	Walk-On™ Smooth	12 x 12
WFS73	Walk-On™ Textured	12 x 12



Don't see what you need?

Our Customer Support Team is here to help you every step of the way.

Reach out today to get started!